

**3 ACRES  
DEVELOPMENT OPPORTUNITY**



**52525 RGE RD 275  
STONY PLAIN, AB**

**Victor Moroz, Associate Broker**  
780.499.6400  
victor@royallepage.ca

**Royal LePage® Noralta Real Estate Inc, Brokerage**  
202 Main Street, Spruce Grove, AB  
Independently Owned & Operated

**FOR SALE**

\$1,425,000.00

## Property Features

- Excellent commercial development opportunity in Stony Plain
- 3.0+/- acres located along Veterans Blvd (Rge Rd 275) south of HWY16A
- Zoned C2 Commercial District - accomodating a wide variety of uses
- Exceptional exposure to local and highway traffic
- Surrounded by established residential neighbourhoods
- Close proximity to expanding commercial amenities
- Located in one of Stony Plain's strongest growth cooridors
- Under 20 minutes to West Edmonton



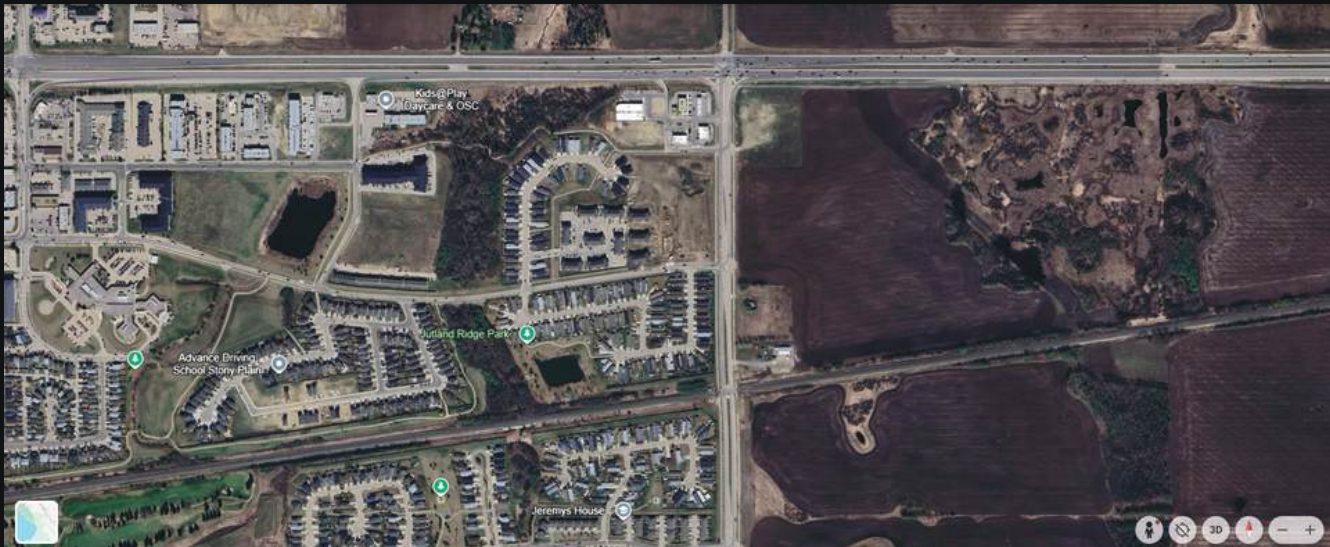
PROPERTY OVERVIEW

# PROPERTY PHOTOS

\*\*Property Lines Approximate  
Not Guaranteed

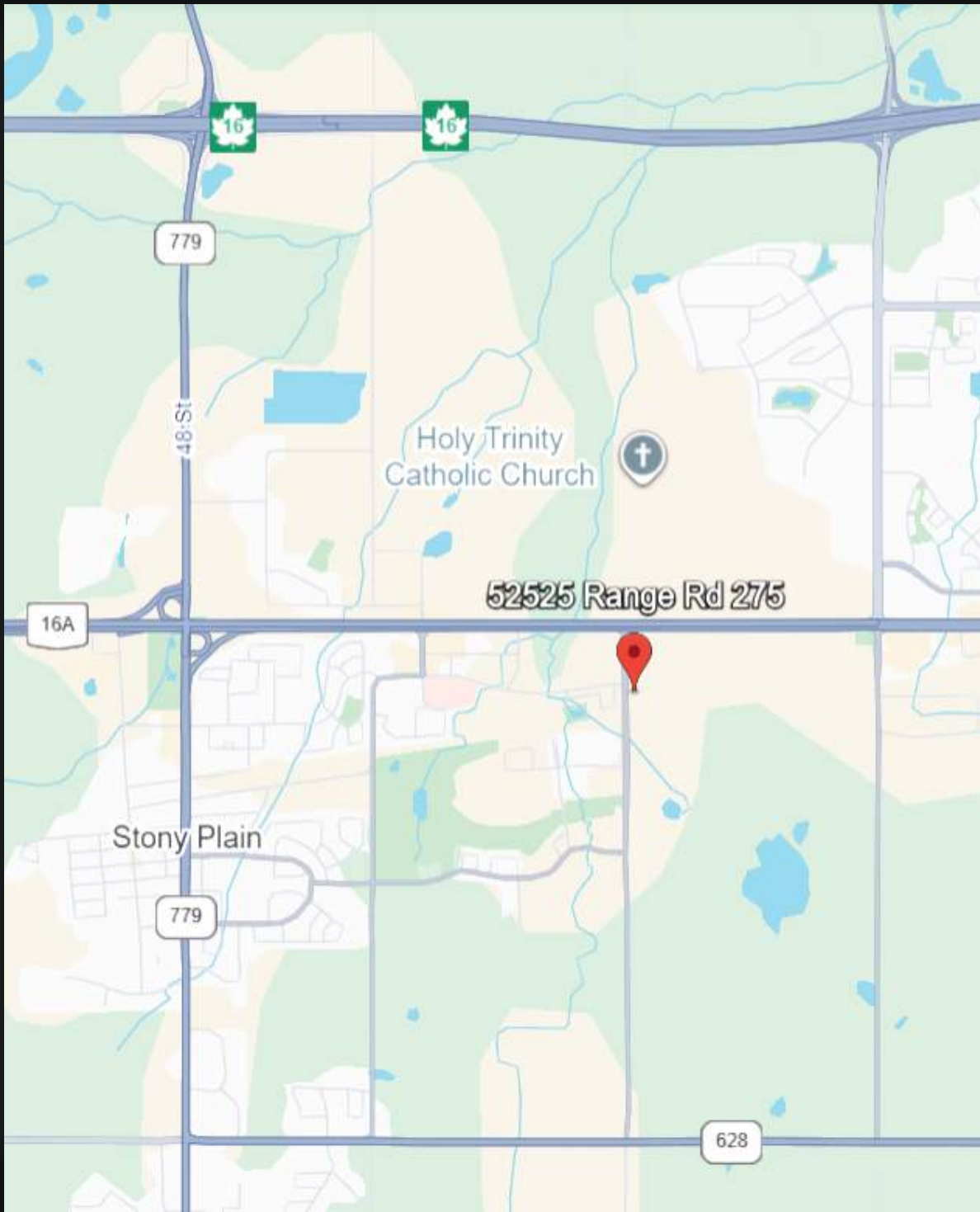


# PROPERTY PHOTOS





# LOCATION MAP



Royal LePage® is a registered trademark of Royal Bank of Canada and is used under licence by Residential Income Fund L.P., Bridgemarq Real Estate Services Inc. and Bridgemarq Real Estate Services Manager Limited. All offices are independently owned and operated, except those marked as indicated at [rlp.ca/disclaimer](http://rlp.ca/disclaimer). Not intended to solicit currently listed properties or buyers under contract. The above information is from sources believed reliable, however, no responsibility is assumed for the accuracy of this information. ©2025 Bridgemarq Real Estate Services Manager Limited. All rights reserved.